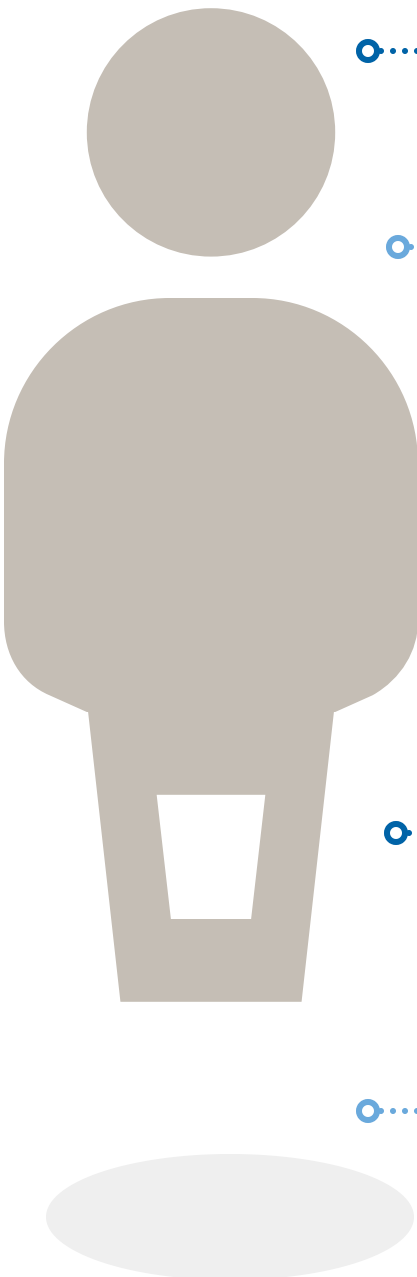


DMI Data Reporting for J&A

Installment #1

Who completed the survey?

We are so thankful for the incredible participation on the recent Disciple Maker Index (DMI) Survey. There is so much great data to share and we will be breaking it up into installments over the next few months to keep all informed. We thought we would first start with demographics - who took the survey? A total of 1,010 total surveys were completed. That equates to 112% of 900 (average Sunday mass going parishioners!)



Gender

64% Female
36% Male



Age

1% under 18	14% 46-55
3% 18-25	24% 56-65
7% 26-35	25% 66-75
16% 36-45	10% Over 75



Education

29% of respondents have school age children
50% of respondents send all children to Catholic school, 43% send children to public school, 1% home school their children, and 6% of parents choose separately for each child



Parish Membership

94% say J&A is their primary place of worship

52% have been here 20+ years	8% 3-5 years
20% for 11-20 years	3% 1-2 years
12% 6-10 years	4% less than one year



Spiritual Journey

96% of respondents identify as Catholic